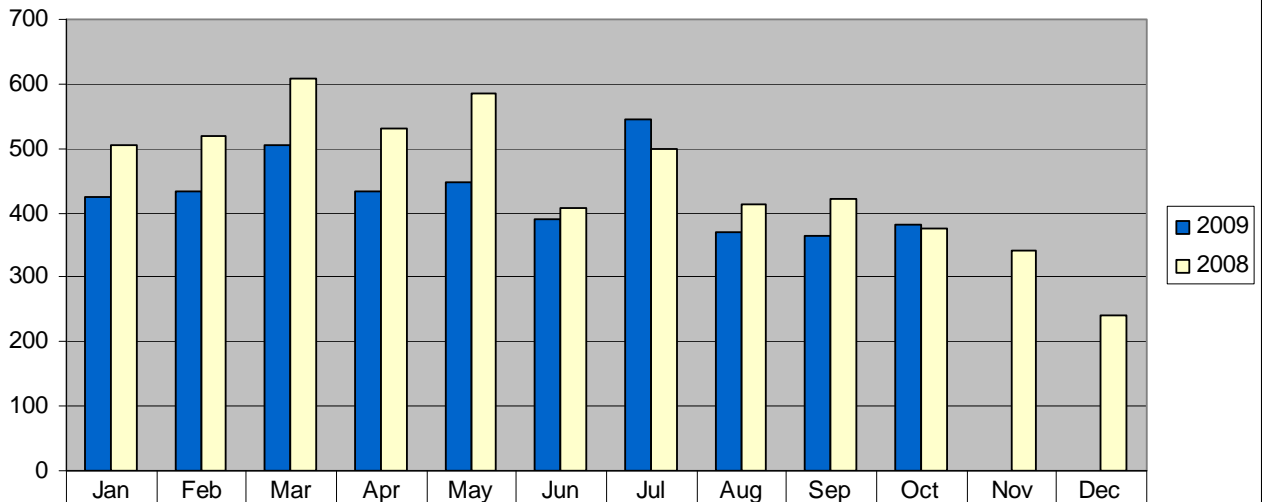
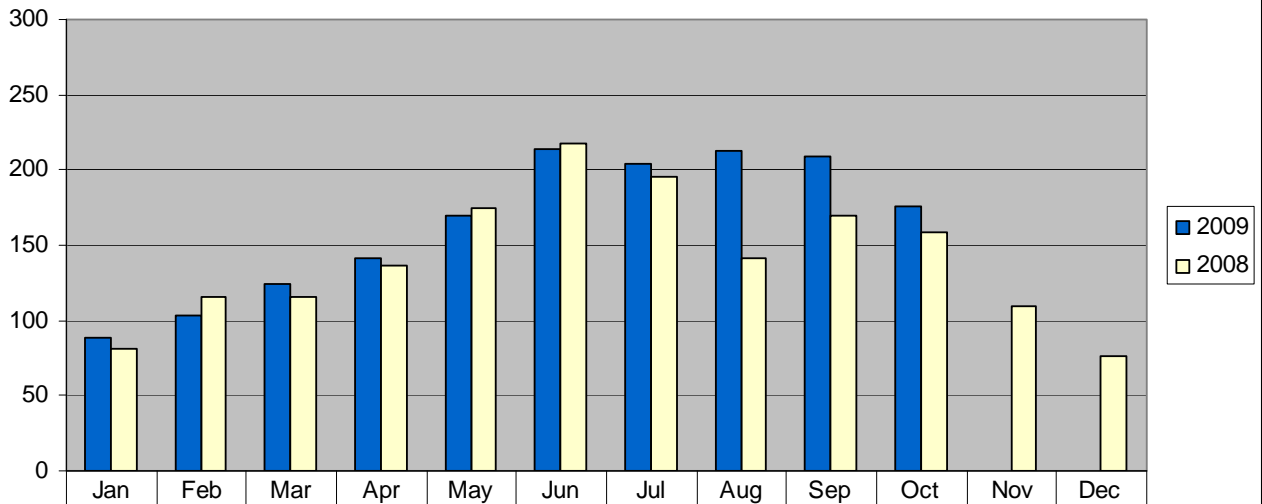


RESIDENTIAL - New Listings



| | | | | | | | | | | | | |
|------|-----|-----|-----|-----|-----|-----|-----|-----|-----|-----|-----|-----|
| 2009 | 425 | 433 | 506 | 433 | 448 | 391 | 544 | 371 | 365 | 381 | | |
| 2008 | 504 | 518 | 607 | 531 | 584 | 407 | 500 | 412 | 421 | 375 | 340 | 240 |

RESIDENTIAL - Monthly Closings



| | | | | | | | | | | | | |
|------|----|-----|-----|-----|-----|-----|-----|-----|-----|-----|-----|----|
| 2009 | 88 | 103 | 124 | 141 | 170 | 214 | 204 | 213 | 209 | 176 | | |
| 2008 | 81 | 116 | 115 | 137 | 175 | 218 | 195 | 141 | 170 | 159 | 110 | 76 |

RESIDENTIAL

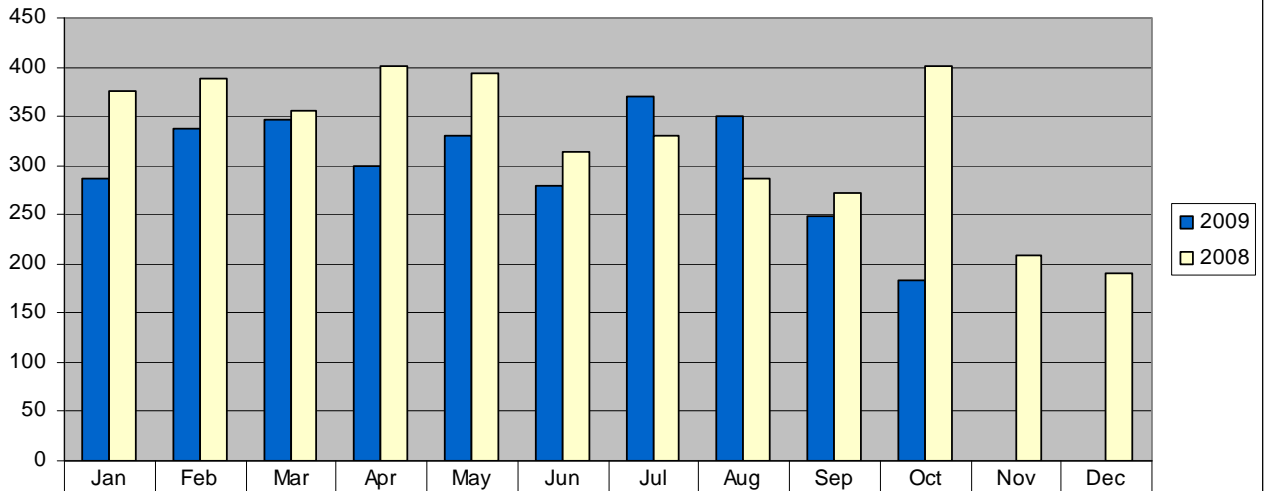
OCT 09 Average List Price - \$326,412

OCT 09 Median List Price - \$229,000

OCT 09 Average Sale Price - \$250,697

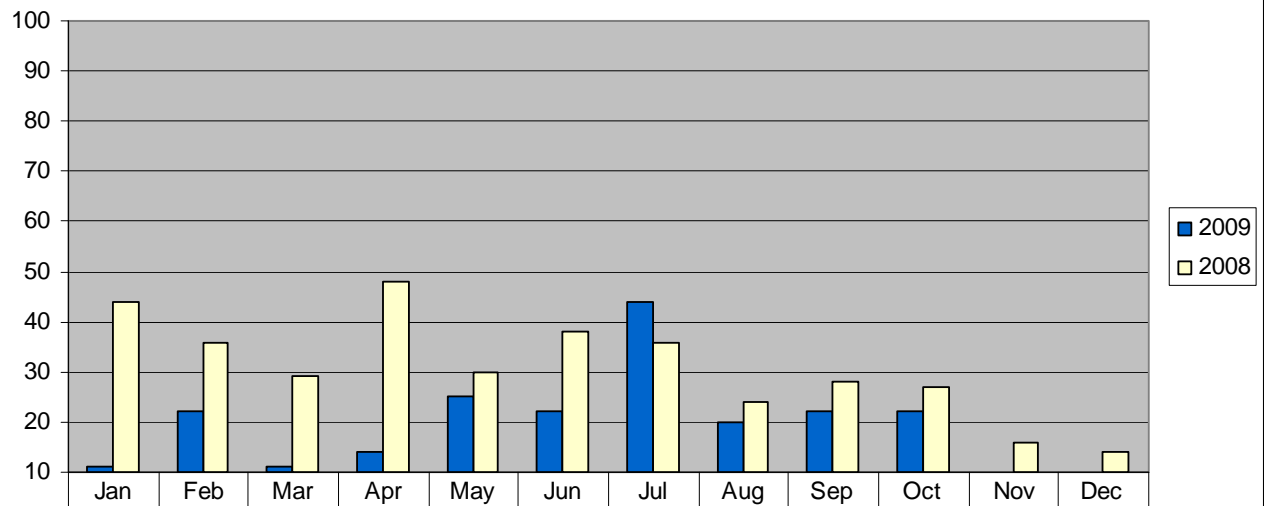
OCT 09 Median Sales Price - \$191,000

LAND - New Listings



| | | | | | | | | | | | | |
|------|-----|-----|-----|-----|-----|-----|-----|-----|-----|-----|-----|-----|
| 2009 | 287 | 337 | 347 | 299 | 330 | 279 | 371 | 351 | 248 | 184 | | |
| 2008 | 375 | 388 | 356 | 401 | 393 | 314 | 331 | 287 | 272 | 401 | 209 | 190 |

LAND - Monthly Closings



| | | | | | | | | | | | | |
|------|----|----|----|----|----|----|----|----|----|----|----|----|
| 2009 | 11 | 22 | 11 | 14 | 25 | 22 | 44 | 20 | 22 | 22 | | |
| 2008 | 44 | 36 | 29 | 48 | 30 | 38 | 36 | 24 | 28 | 27 | 16 | 14 |

LAND

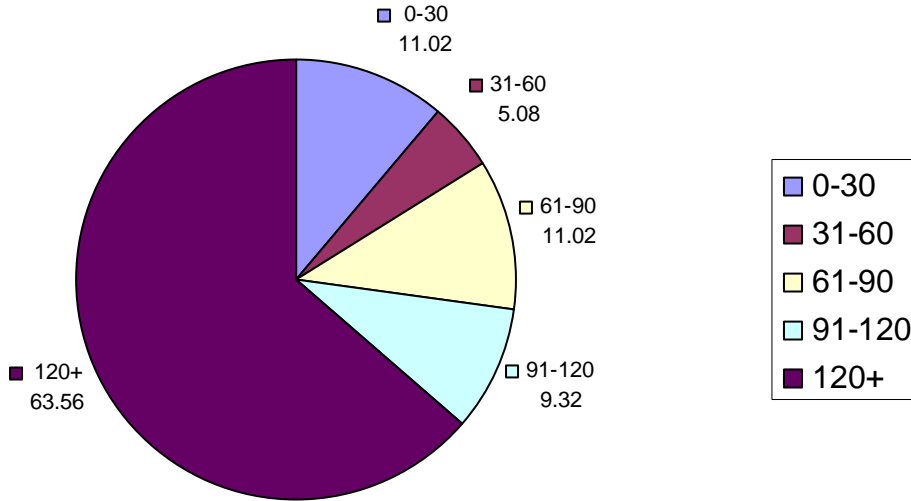
OCT 09 Average List Price - \$131,988

OCT 09 Median List Price - \$87,000

OCT 09 Average Sale Price - \$117,659

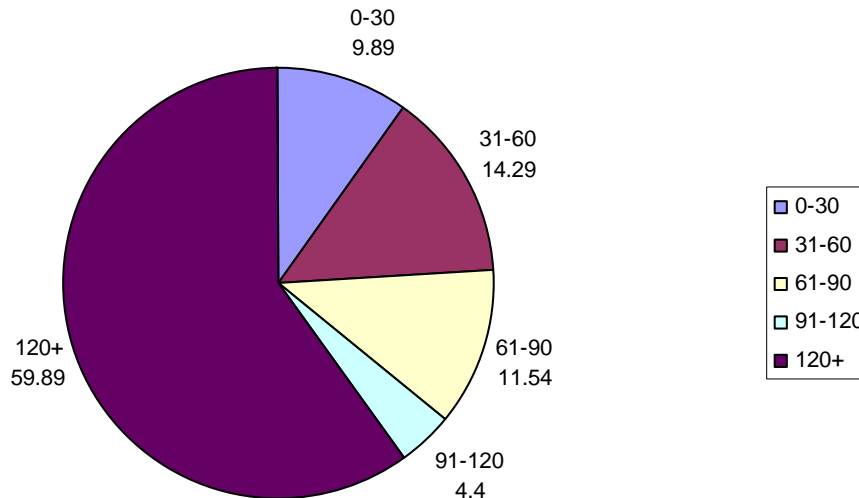
OCT 09 Median Sales Price - \$65,000

DOM - Residential Monthly Sales - OCTOBER



Reported Residential Sales from **October 1, 2009** through **October 31, 2009**

DOM - Land Monthly Sales - OCTOBER 2009



Reported LAND Sales from **October 1, 2009** through **October 31, 2009**