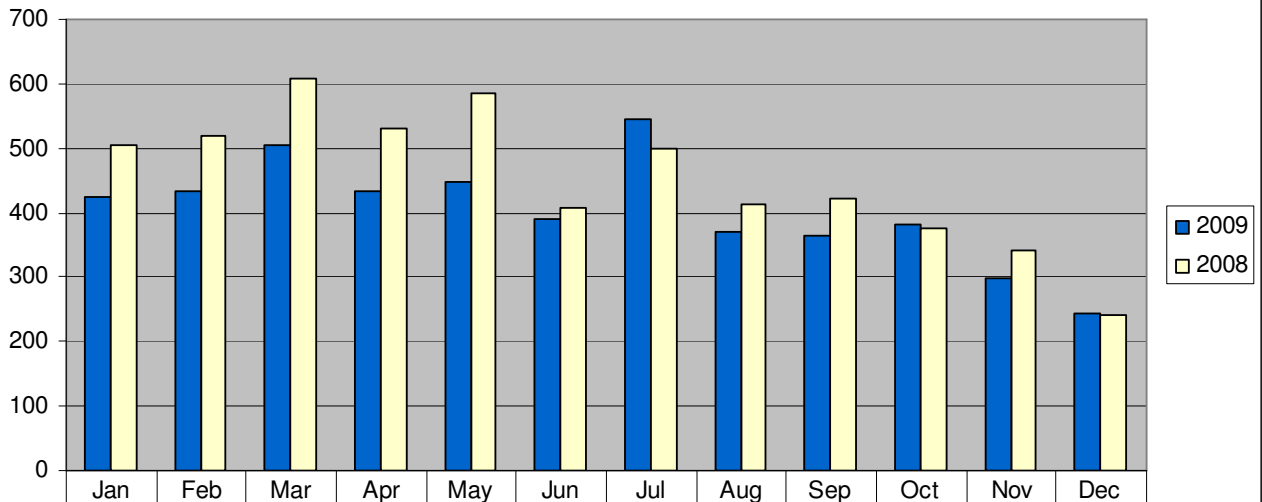
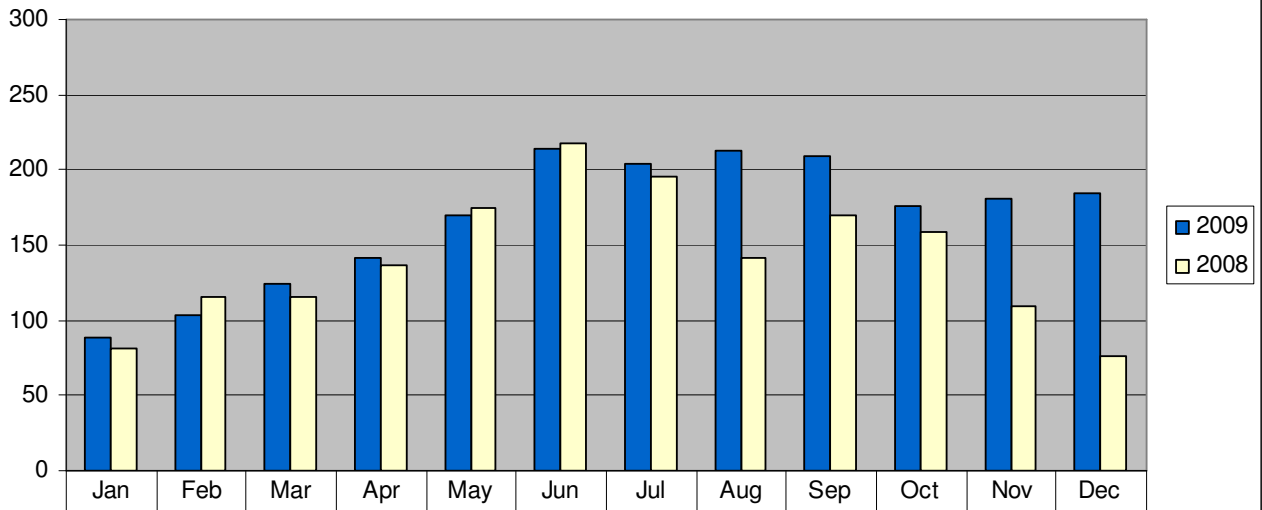


RESIDENTIAL - New Listings



■ 2009	425	433	506	433	448	391	544	371	365	381	299	245
□ 2008	504	518	607	531	584	407	500	412	421	375	340	240

RESIDENTIAL - Monthly Closings



■ 2009	88	103	124	141	170	214	204	213	209	176	181	184
□ 2008	81	116	115	137	175	218	195	141	170	159	110	76

RESIDENTIAL

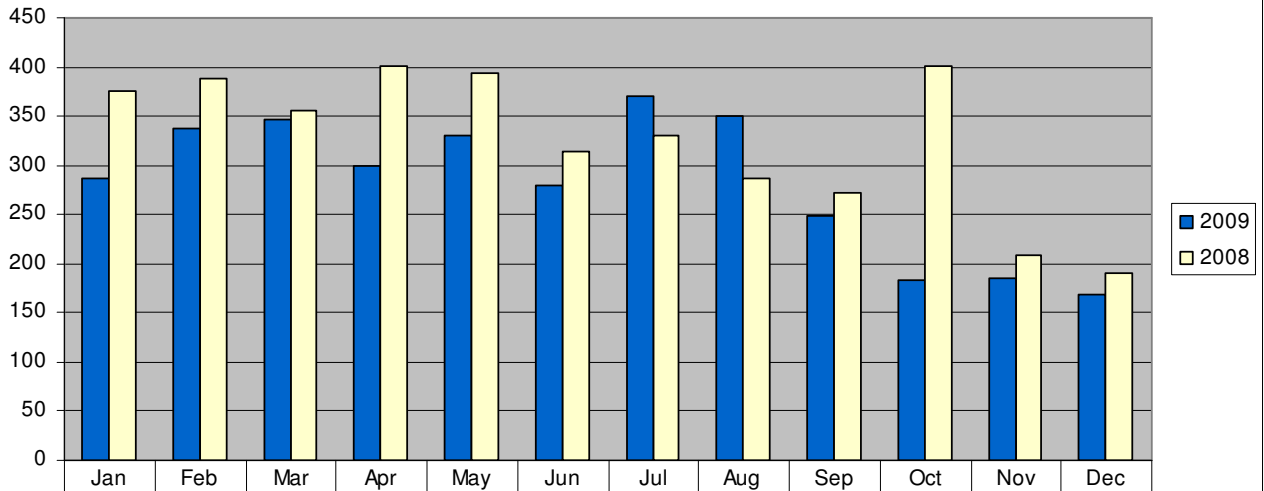
DEC 09 Average List Price - \$303,350

DEC 09 Median List Price - \$219,900

DEC 09 Average Sale Price - \$357,040

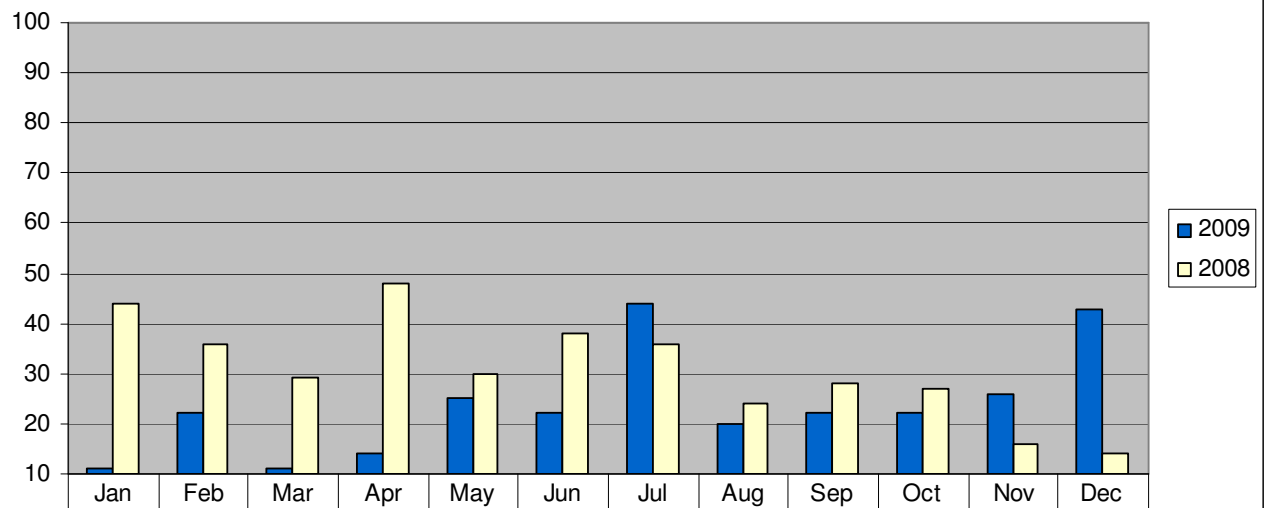
DEC 09 Median Sales Price - \$219,900

LAND - New Listings



2009	287	337	347	299	330	279	371	351	248	184	185	169
2008	375	388	356	401	393	314	331	287	272	401	209	190

LAND - Monthly Closings



2009	11	22	11	14	25	22	44	20	22	22	26	43
2008	44	36	29	48	30	38	36	24	28	27	16	14

LAND

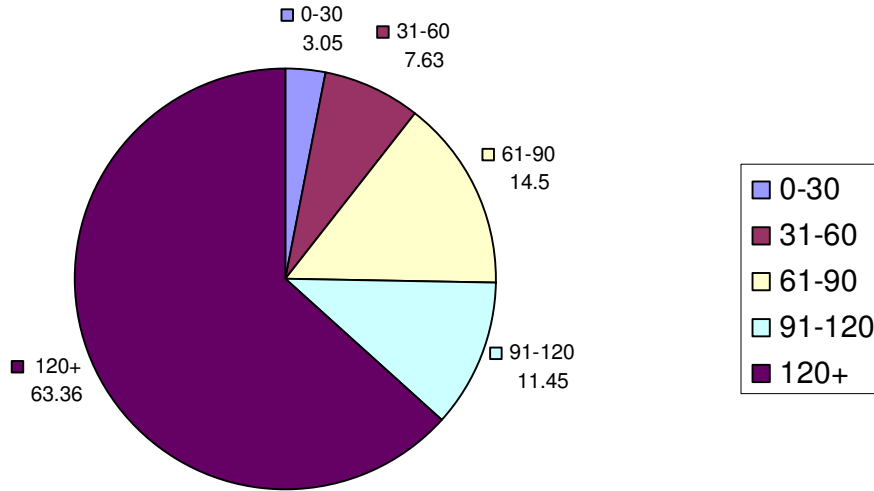
DEC 09 Average List Price - \$145,522

DEC 09 Median List Price - \$109,000

DEC 09 Average Sale Price - \$101,277

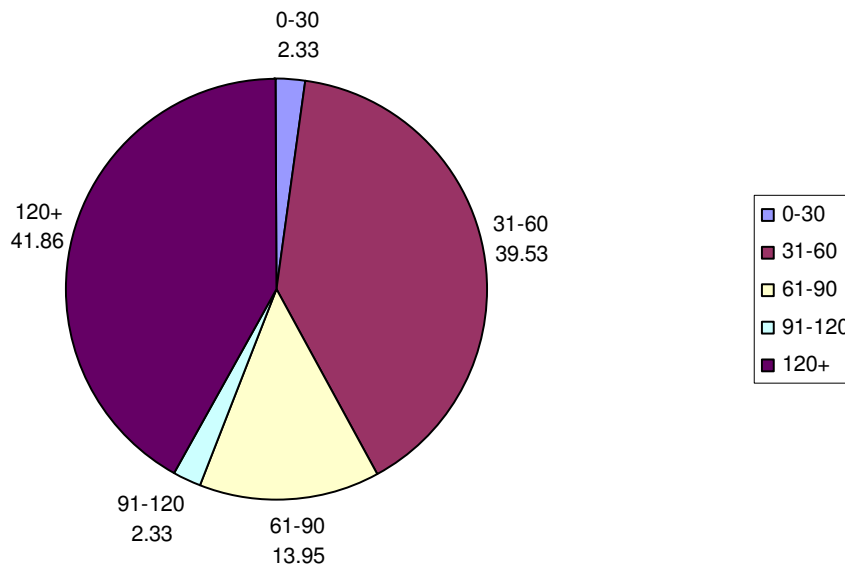
DEC 09 Median Sales Price - \$40,000

DOM - Residential Monthly Sales - DECEMBER 2009



Reported
RESIDENTIAL
Sales from
**December 1,
2009 through
December 31,
2009**

DOM - Land Monthly Sales - DECEMBER 2009



Reported
LAND Sales
from
**December 1,
2009 through
December 31,
2009**